





# THE MINER

**A REVIEW OF THE SCHOOL YEAR  
1934 - 1935**

PUBLISHED BY THE STUDENTS OF THE  
HANNA HIGH SCHOOL



## FOREWORD

This annual is the result of the concentrated efforts of the staff to record in as interesting a manner as possible the events of the school year 1934-1935.

May the students of Hanna High treasure it and regard it as a symbol of the excellent school spirit shown throughout the year.

It is the sincere wish of the staff that this spirit live forever.



# CONTENTS

---

ADMINISTRATION

CLASSES

ACTIVITIES

ATHLETICS

GENERAL

HUMOR



### DEDICATION

We, The Miner Staff of 1935, dedicate this issue of The Miner to the Board of Education in appreciation of their cooperation in launching a program of activities which will give to the children of Hanna the same privileges and opportunities of schooling which children of other communities enjoy.



## ADMINISTRATION



# MINER



MR. S. D. BRIGGS  
Clerk of the Board of Education



MR. ROBERT NORRIS  
Treasurer of the Board of Education



MR. O. G. SHARRER  
President of the Board of Education



MR. J. H. CRAWFORD



MRS. HENRY PETERSON



MRS. ROY CUMMINGS

BOARD OF EDUCATION

# MINER



MR. F. P. McCALL, M.A.  
*University of Idaho*  
SUPERINTENDENT OF SCHOOLS



# MINER

## FACULTY



MISS KATHLEEN FERGUSON



MISS HELEN FRANCIS, B.A.



MISS VELMA RANDALL, B.S.



MR. MARVIN E. KNUDSON, B.A.



MR. G. N. MILAN, B.A.

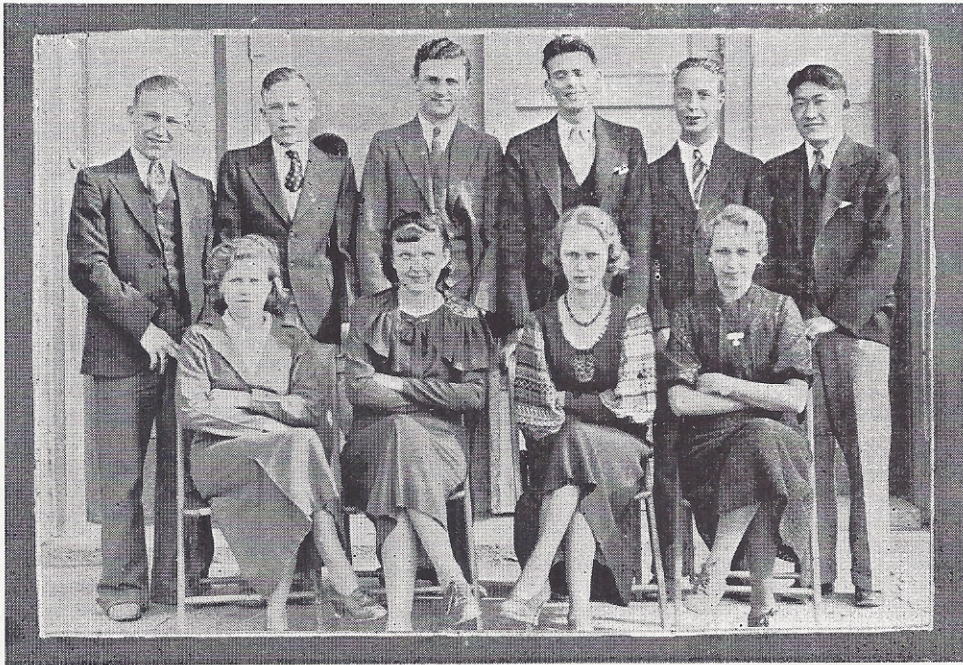


MISS ALMA KELSEN, B.A.



MR. E. N. PEARSON, B.S.

# MINER



## STUDENT COUNCIL

A Student Council in the Hanna High School was first organized by Mr. McCall in the fall of 1934. The purposes of having a student organization are to develop cooperation among students, to promote interest in all of the school organizations, to stimulate work in literary, musical, and social activities, and to help the students work with the faculty for the betterment and improvement of our school.

All students who are elected to the Council must be up to, or above average in school subjects.

The following students were elected to represent the student body: Woodrow Riva and Gertrude Salo, Senior Class; Esther Worsley and Henry Lemoine, Junior Class; Richard Kuwabara, Sophomore Class; Marion Stewart, Freshman Class; Elsie Kautto, Girls' Booster Club; Ed. Ainsworth, Atheniad; La Verne Hartman, Diatelian; and Clarence Lucas, Boys' H Club. Gertrude Salo is president of the Council.



# STAFF

---

---

# MINER

## STAFF



LEONE RUSSELL  
Editor



MABLE NORRIS  
Business Manager



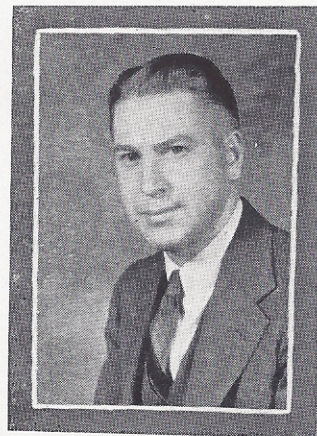
JOHN ROBERT DEXTER  
Assistant Business Manager



CLARA LEMOINE  
Assistant Editor



MISS HELEN FRANCIS  
Sponsor



MR. MARVIN E. KNUDSON  
Sponsor

# MINER



### CLASSES

Senior—Kivi  
 Junior—Molyneux  
 Sophomore—N. Kautto  
 Freshman—Sharrer

ACTIVITIES—J. Briggs, Bowers,  
 Smith, Siltamaki

GENERAL—Lee, Salo, Hartman,  
 Mellor

ATHLETICS—Jones, Wilkes

ART—E. Kautto, Okomoto, Winchell,  
 Lucas

JOKES—White, H. Briggs, Wales

TYPISTS—Killion, Norris, Taccalone,  
 Wales



# CLASSES

---

---

# MINER

## SENIORS



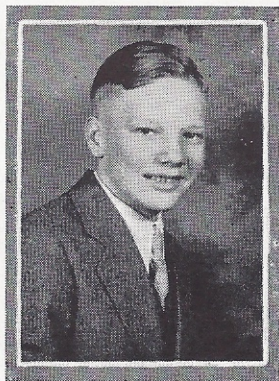
**WILHO J. KIVI**  
President  
"Kivi"

President Senior Class	
Orchestra	32-33-34-35
Chorus	32-33
Dramatics	34-35
Office	34
Pioneer Reporter	34
Business Manager	35
Annual Staff	35
Honor Society	35
Printing	35
Atheniad	35
Booster Club	33



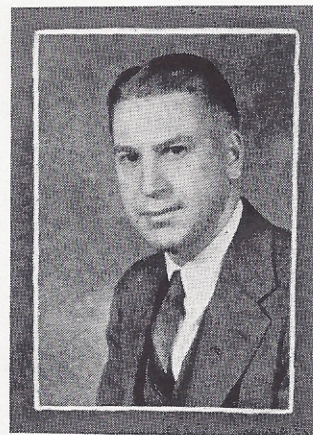
**LEONE RUSSELL**  
Vice President  
"Blackie"

Basketball	32-33-34-35
Chorus	32-33-34-35
Booster Club	32-33-34-35
Pioneer Reporter	32
Pioneer Editor	35
Library	33-34-35
Honor Society	35
Diatelian	35
Vice President Class	35
Dramatics	34
Annual Staff	35



**HAROLD A. S'LTAMAKI**  
Secretary-Treasurer  
"Skinner"

Booster Club	33
Chorus	33
Senior Secretary and Treas.	35
Printing	35
Latin Club	35
Atheniad	35
Honor Society	35
Annual Staff	35
Pioneer Staff	33-35
Orchestra	32-33-34



**MARVIN E. KNUDSON**  
Sponsor

# MINER

## SENIORS



**EDWARD C. AINSWORTH**  
"Snozz"

Student Council . . . . .	35
Football . . . . .	35
Chorus . . . . .	33-34-35
Latin Club . . . . .	35
Dramatics . . . . .	34
Atheniad . . . . .	35
Booster Club . . . . .	33
"H" Club . . . . .	35



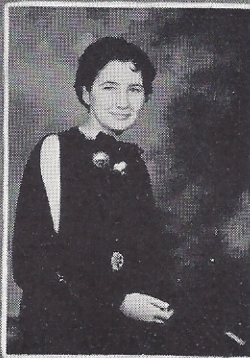
**MARGARET BRIGGS**  
"Marg"

Basketball . . . . .	32-33-34-35
Cheer Leader . . . . .	33-34-35
Dramatics . . . . .	34-35
Humor Editor Pioneer . . . . .	35
Office . . . . .	35
Booster Club . . . . .	32-33-34-35
Chorus . . . . .	33-34
Atheniad . . . . .	35
Library . . . . .	33



**MELVILLE CRUICKSHANK**  
"Melv"

Football . . . . .	33-34-35
Basketball . . . . .	34-35
Track . . . . .	34
Pioneer Staff . . . . .	35
"H" Club President . . . . .	35
Class President . . . . .	32
Diatelian . . . . .	35



**CATHERINE EVANS**  
"Cat"

Basketball . . . . .	33-34-35
Chorus . . . . .	33-34-35
Booster Club . . . . .	33-34-35
Diatelian . . . . .	35
Pioneer Reporter . . . . .	33
Dramatics . . . . .	35
Vice President . . . . .	33
Secretary-Treasurer . . . . .	34
Latin Club . . . . .	35



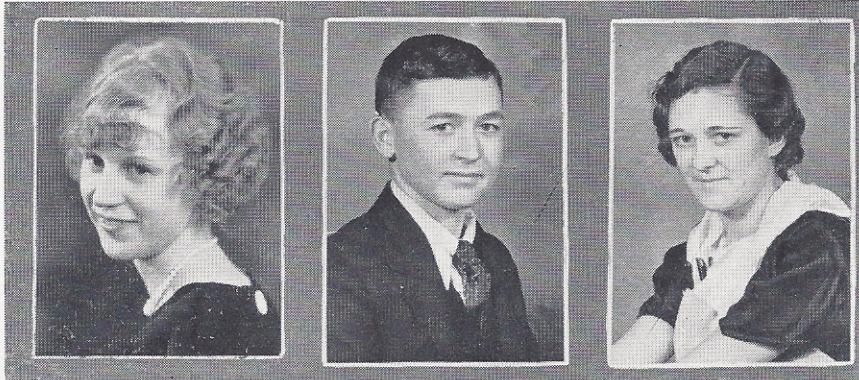
**LE ROY JONES**  
"Nip"

Basketball . . . . .	35
Printing . . . . .	35
Annual Staff . . . . .	35
Book Binder . . . . .	35
Diatelian . . . . .	35
Library . . . . .	35
Pioneer Staff . . . . .	35
"H" Club . . . . .	35



# MINER

## SENIORS



**ELSIE KAUTTO**  
"Els"

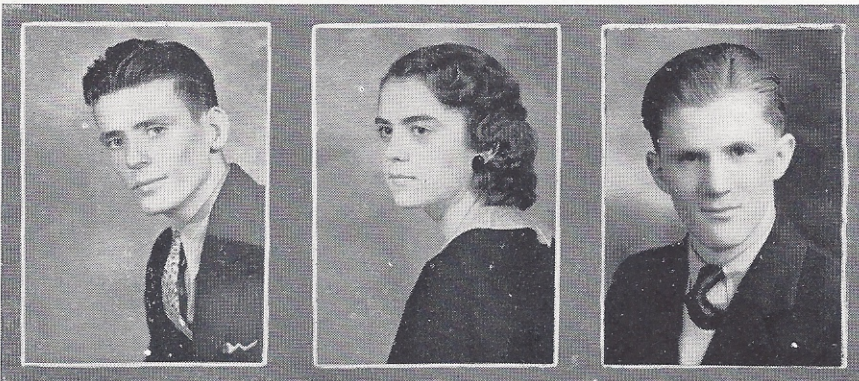
Chorus . . . . .	32-33-35
Booster Club . . . . .	32-33-34-35
Student Council . . . . .	35
Diatelian . . . . .	35
Latin Club . . . . .	35
Annual Staff . . . . .	35
Pioneer Staff . . . . .	35

**CLYDE D. KILLION**  
"Killion"

Orchestra . . . . .	34-35
Chorus . . . . .	32-33
Dramatics . . . . .	35
Pioneer Staff . . . . .	35
Annual Staff . . . . .	35
Office . . . . .	35
Diatelian . . . . .	35
Printer . . . . .	35

**MARY ALICE NORRIS**  
"Al"

Library . . . . .	33-35
Chorus . . . . .	32-33
Diatelian . . . . .	35
Dramatics . . . . .	34
Pioneer Staff . . . . .	35
Annual Staff . . . . .	35
Booster Club . . . . .	32-33-34-35
Latin Club . . . . .	34



**CLARENCE LUCAS**  
"Pump"

Basketball . . . . .	34-35
Football . . . . .	34-35
Dramatics . . . . .	34-35
Latin Club . . . . .	35
"H" Club . . . . .	34-35
Student Council . . . . .	35
Atheniad . . . . .	35
Chorus . . . . .	32-33
Booster Club . . . . .	33

**MABLE NORRIS**  
"Mabe"

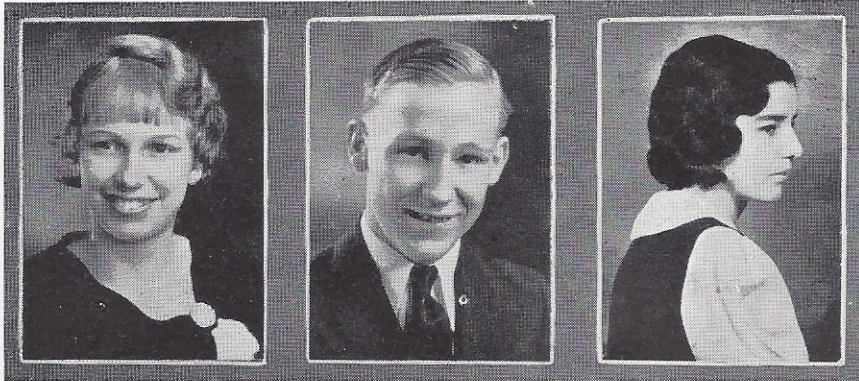
Orchestra . . . . .	32-33-34-35
Chorus . . . . .	32-33-34
Library . . . . .	33-34
Booster Club . . . . .	33-34-35
Dramatics . . . . .	34-35
Office Work . . . . .	33-34-35
Class President . . . . .	34
Booster Club President . . . . .	35
Pioneer . . . . .	34-35
Business Mgr. of Annual . . . . .	35
Atheniad . . . . .	35
Honor Society . . . . .	35

**JOHNNIE L. MATTILA**

Latin Club . . . . .	35
Chorus . . . . .	33-34
Booster Club . . . . .	33
Diatelian . . . . .	35

# MINER

## SENIORS



**GERTRUDE SALO**  
"Gertie"

Secretary-Treasurer . . . . .	32-33
Basketball . . . . .	33-34-35
Chorus . . . . .	32-33-34-35
Dramatics . . . . .	34-35
Pioneer Reporter . . . . .	33
Assistant Editor . . . . .	35
Booster Club . . . . .	32-33-34-35
Library . . . . .	33-34-35
Student Council President . . . . .	35
Annual Staff . . . . .	35
Honor Society . . . . .	35
Diatelian . . . . .	35

**WOODROW RIVA**  
"Pud"

Basketball . . . . .	32-33-34-35
Football . . . . .	32-33-34-35
Track . . . . .	33-34
"H" Club . . . . .	32-33-34-35
Dramatics . . . . .	35
Atheniad President . . . . .	35
Student Council . . . . .	35
Pioneer Staff . . . . .	33-35
Office . . . . .	32-33

**JULIA TACCALONE**  
"Tack"

Chorus . . . . .	32-33-34-35
Booster Club . . . . .	32-33-34-35
Annual Staff . . . . .	35
Diatelian . . . . .	35



**RICHARD WALES**  
"Fuzz"

Vice President . . . . .	34
Basketball . . . . .	33-34-35
Football . . . . .	33-34-35
Dramatics . . . . .	34-35
"H" Club . . . . .	34-35
Diatelian President . . . . .	35

**ALICE WHILE**  
"Al"

Basketball . . . . .	32-33-34-35
Dramatics . . . . .	34
Diatelian . . . . .	35
Chorus . . . . .	32-33-34
Cheer Leader . . . . .	35
Annual Staff . . . . .	35
Library . . . . .	34-35
Circulation Ed. of Pioneer . . . . .	35
Treas. of Booster Club . . . . .	35

**EVERETT WINCHELL**  
"Ev"

Glee Club . . . . .	31-32-33
Football . . . . .	34-35
Basketball . . . . .	34-35
Dramatics . . . . .	31
Pioneer Staff . . . . .	33
Sophomore President . . . . .	30
"H" Club . . . . .	34-35
Diatelian . . . . .	35



## SENIOR HISTORY

### PROLOGUE:

Much wailing, romping, bawling and general commotion—(Seniors are born—kicking up a fuss already.)

Follows glorious music—soothing music—dreamy music—the present Seniors quietly spending 8 years in the grades. Suddenly the music ends with a crash!—(The Senior Class crashes the gate of the Hanna High School.)

### ACT I

Scene: Freshman Meeting.

Time: School year of '31 and '32.

As the curtain rises, a general commotion (rough house) is going on—a meeting (?). In comes the sponsor, Mr. Marvin E. Knudson, followed by the president in disguise—Leone Russell—we knew it all the time.

The Sophomores got wind of our oneriness and decided to take it out of us—by means of a party—for whom? Which they did. Act I ends with the recovery—(to all but dignity) of the Freshmen.

### ACT II

Scene: H. H. S.

Time: School year of '32 and '33.

Enter the sassy, nutty, frolicsome Sophomores. President—Gertrude Salo. Sponsor—Mr. Marvin E. Knudson. Feeling like we owned the world, we took the Freshmen to the gym and “gave 'em the works.” This made us feel very much better, and we close Act II with a feeling of good will to all men—except Freshmen—we too had learned to detest those below us.

### ACT III

Scene: H. H. S.

Time: School year '33 and '34.

Enter the president, Mable Norris. Sponsor Marvin E. Knudson. Envy-ing the class of '34, we decided to make the best of it—giving the Last Round-Up in their honor. Also tossing the Junior Play—“Oh My Stars.”—Cast: Wilho Kivi, Mable Norris, Margaret Briggs, Edward Ainsworth, Alice While, Richard Wales, Gertrude Salo, Alice Norris, Leone Russell, Clarence Lucas—sponsored by Miss Randall.

The year ended with us having become very serious minded individuals—the Juniors had finally discovered that they were attending school—longing to step forth with sheepskin in hand to conquer the world.

### ACT IV

Scene: Same.

Time: School year of '34 and '35.

President, Wilho Kivi; sponsor, Marvin E. Knudson; secretary and treasurer, Harold Siltamaki; vice president, Leone Russell; student councilman, Gertrude Salo. Came and went the Carnival. Came and went the Senior Prom, the Senior-Junior Play—“A Full House”—as this year has whizzed by, leaving us astounded. We are at last upon the portals of HHS—this time going out—after four years of education and frolics. May we now say good-bye to our faithful school-mates and patient teachers—we are going to seek our fortune in the world.



## SENIOR PROPHECY

September 13, 1940  
Woolly Wilderness,  
Adirondack Mountains,  
U. S. A.

My dear Old Maestro:

Knowing that you are interested in coincidences of fate, I will write to you a narration of the experiences of the members of the Senior Class of the Hanna High School of 1935.

As you know, I am a geologist. I am up here in the Adirondacks, digging up fossils of a species of Stegosaur—a fossil among fossils. One day this week I went to a small hamlet, named Covina—of 1,000,000 inhabitants, to mail this letter—believe it or not. While ambling down the street, whom did I meet but old Woodrow (Pud) Riva. Pud was taking a short run with the members of his football squad. He dismissed the boys and came over to “chew” with me. (Were we glad to meet?) Pud suggested a spot down the road for lunch. We journeyed. We had only had two helpings of white fowl, when in walked a very dignified, solemn looking individual—Richard (Fuzz) Wales. Fuzz is the principal of the Covina High School. For the first time since they handed him his sheepskin at Love’s Hall, Fuzz smiled. After the usual greetings were over, we had to start all over with a little guy—an aviator—Harold Siltamaki. Hags had an appointment in New York at four, and invited us to take the day off and journey in his air limousine to the metropolis.

We went. As we zoomed thrillingly through the air with Hags at the controls, we suddenly spotted a plane overtaking us—the air yacht of Johnnie Mattila. We landed and went over to see old John, and who do you suppose was with him? Alice While! Johnnie, as you know, is an aviator, and Alice is a “show” model for the gowns created by Saks, Fifth Avenue, N. Y. Again greetings and salutations were exchanged. As the conversation shifted on, a tall stately young man, Clarence Lucas, appeared with his stenographer—Mable Norris. Clarence is the successor in Criminal Law, to Clarence Darrow. Then the possibility of having



## SENIOR PROPHECY

a class reunion seemed to present itself. Plans were made to have a vacation-reunion over the week-end. Lucas offered us the use of his palatial country home for the party. We motored to the palace, and after viewing the dive, dispatched messengers in fleet planes to the homes of each member of the class of '35 with orders to bring back only the said member minus wife and family—if such were on hand. Interior decorators were summoned to decorate the ballroom in silver and blue, and the carnation was deemed the flower of the occasion.

In less than an hour, guests began to arrive. First came Julia Taccalone—now opera singer at the Metropolitan. Then in the order named arrived: Edward (Schnozzle) Ainsworth in the dazzling uniform of an army major; Margaret Briggs—now a housewife, away out in Wyoming; Catherine Evans, also married, living in Denver; LeRoy Jones, now a recognized arc-welder, working in the Mississippi valley on a dam project. Then came Elsie Kautto—a widely-known art.st. Next came buxom Alice Norris — a housewife from the plains of Wyoming. Clyde Killion suddenly loomed in the doorway—fat, as usual, now a radio operator on the S. S. Floatina. As time went on, Gertrude Salo, noted movie star from Hollywood appeared. Then came the noted author and philosopher, Leone Russell. Almost last was a member of the National Board of Educational improvements—Marvin E. Knudson—our old sponsor. Following him was Everett Winchell, of radio and newspaper fame, successor to Walter. With him was another newspaper man, of the New York Sun, Melville Cruickshank, sports editor.

The party lasted the full two days. A very enjoyable time was had by all, and it was suggested that another reunion be held in 1945.

I wish you could have been with us.

Yours very truly,  
WILHO KIVI.



## SENIOR WILL

LAST WILL AND TESTAMENT. We, the Senior Class, of the Hanna High School, the City of Hanna, State of Wyoming, being of sound mind and memory, do make, publish, and declare this our last will and testament, in manner and form as follows:

FIRST: We direct that all our just debts and graduation expenses be paid as soon after our departure as conveniently can be done.

SECOND: I, Richard Wales, do bequeath my well combed locks to Albert Molyneaux. May he make use of them.

THIRD: I, Harold Siltamaki, do give and bequeath my interest in the Peacock Coal Company to the Union Pacific Coal Company. May it tide them over these hard times.

FOURTH: I, Mable Norris, give and devise to Rosie Bisignano my stature. May she soon attain to it.

FIFTH: I, Woodrow Riva, do bequeath and devise my interest in a certain Junior girl to Herbert Morgan.

SIXTH: I, Melville Cruickshank, do bequeath my deep interest in school and my school work to Jimmie Smith. May it aid him in overcoming his idolot habits.

SEVENTH: I, Clyde Killon, do give and bequeath my long gray overcoat and well filled brief case to Raymond Peterson.

EIGHTH: I, Leone Russell, do give and devise my recalcitrant nature to Donald Park.

NINTH: I, Gertrude Salo, do give and bequeath LeRoy Jones to Dorothy June Brindley.

TENTH: I, Margaret Briggs, leave my studiousness to Louise Bowers. May it aid her in getting better grades.

ELEVENTH: I, LeRoy Jones, leave my coyote trap line to LaVerne Hartman.

TWELFTH: I, Julia Taccalone, deed my interest in Mr. Knudson to Jackie Pickup.

THIRTEENTH: I, Clarence Lucas, do bequeath my ability to tell the truth on all occasions to Beth Lee.

FOURTEENTH: I, Alice While, leave my "Come up and see me some time" to Raakel Jussila.

FIFTEENTH: I, Elsie Kautto, leave my histrionic ability to Esther Worsley. May it gain her much glory.

SIXTEENTH: I, Catherine Evans, do give and bequeath my maiden name to whomsoever may use it, for I shall forsake it soon.

SEVENTEENTH: I, Wilho Kivi, leave my ability to tickle the ivories to Waitto Waisanen. May he add it to his other musical accomplishments.

EIGHTEENTH: I, Edward Ainsworth, do give, bequeath and devise my snuzzle to Midori Okomoto.

NINETEENTH: I, Alice Norris, do give and bequeath my raucous voice and loud ways to Joe Mellor.

TWENTIETH: I, Everett Winchell, do give and devise to Weikko Jussila my way with the opposite sex. May it stand him in good stead.

LASTLY: We hereby nominate and appoint Marvin E. Knudson, teacher in the Hanna High School of Hanna, Wyoming, to be executor, without bond, of this our last will and testament; and we hereby revoke all former wills and testamentary instruments.

IN WITNESS WHEREOF, We have hereto subscribed our name and affixed our seal this twenty-fourth day of May, in the year of our Lord one thousand nine hundred and thirty-five.

(SEAL)

THE SENIOR CLASS.

# MINER

## JUNIORS



LOUISE BOWERS  
President



ALBERT MOLYNEUX  
Vice President



CLARA LEMOINE  
Secretary-Treasurer



MISS HELEN FRANCIS  
Sponsor



JOHN ROBERT DEXTER



SUSIE BISIGNANO



LA VERNE HARTMAN



MARY MELLOR



PETE KOTSIFAKIS



FREDA PCKUP



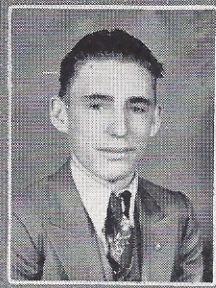
HENRY LEMOINE



ANGELINA POULOS

# MINER

## JUNIORS



JOE MELLOR



JANE WALES



HERBERT MORGAN



ESTHER WORSLEY



RAYMOND PETERSON



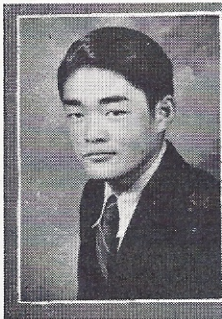
JACK PICKUP



EUGENE SALO



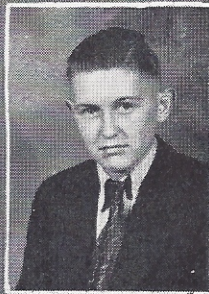
JIMMIE SMITH



FRED WAKABAYASHI



WAITTO WAISSANEN



EVERT WIST





## JUNIOR CLASS HISTORY

When the class of 1936 entered the Hanna High as Freshmen we thought that we would have the grandest time ever as far as school was concerned. In this assumption we were very badly mistaken, for when we were initiated we realized that it wasn't going to be as easy as it had seemed.

We were initiated in the middle of September, 1932, and put through the so-called mill. We elected Miss Ruth Lippincott as our class sponsor that year. Louise Bowers was elected as our class president.

The next year we were Sophomores, and we felt that we were gradually climbing higher on the ladder of success. We had more confidence in ourselves and felt very superior to the lower classmen, the Freshmen. We initiated the Freshmen in the customary way and thus felt that we had evened the score. This year our sponsor was Mr. Lunsford and our class president was John Dexter.

Our Junior year, we feel, has been our outstanding year so far in High School. The chief events in which we participated were the Junior-Senior play and the Junior-Senior banquet and prom. This year our president is again Louise Bowers and our sponsor is Miss Francis.



## SOPHOMORES

President . . . . . Tony Taccalone  
 Vice President . . . . . Jean Briggs  
 Secretary . . . . . Helen Briggs  
 Treasurer . . . . . Beth Lee  
 Sponsor . . . . . Miss Randall

The 4th of September, 1933, dawned without a cloud in the sky. It was a historical day for 19 lads and lassies of the Hanna High School.

What would algebra be like? Could we get General Science? Do you blame us for being a little excited?

The others termed us green Freshies, but we felt quite important for we were now in senior high.

Soon we settled down and became organized. Mr. Thompson was chosen sponsor. For president we elected Beth Lee.

The Sophomores favored us with a party at the beginning of the year.

Having succeeded in the Freshman course, the pupils were granted the title of Sophomores on September 4, 1934. Now for geometry. Wouldn't it be fun to draw those pictures? But no. Hear them: "Those theorems! Oh!"

An initiation party was given to the Freshmen on September 18, 1934. This party was a great success. Everybody enjoyed it immensely.

We, Sophomores, are now looking forward to the time when we will be Juniors.

# MINER



## FRESHMAN

### FIRST SEMESTER

President . . . . . Jack Tate  
 Vice President . . . . . Weikko Jussila  
 Secretary . . . . . Corinne McCall  
 Treasurer . . . . . Bill Bullock  
 Student Council Representative . . . . . Marion Stewart

### SECOND SEMESTER

President . . . . . Jack Sharrer  
 Vice President . . . . . Leland Hartman  
 Secretary . . . . . Harriet Okomoto  
 Treasurer . . . . . Sidney Morgan  
 Student Council Representative . . . . . Marion Stewart  
 Sponsor . . . . . Miss Kelsen

On the fourth of September, 1934, 30 Freshmen, eighteen boys and twelve girls, reported to take up their studies in the Hanna High School. We were duly installed and proudly began our life in that institution.

Things progressed smoothly until the night of September 29, when the Freshmen were assembled in the gym for initiation. A good time was enjoyed by all but the Freshmen.

On December 7, the Freshman Class gave a return party for the Sophomores. We believe this party was a great success. Everyone, including the Freshmen, had a good time.

Next year we will be Sophomores. We shall all do our best to uphold the standards set by the preceding classes.



In Memoriam



John Robert Dexter



"Though he were dead,  
yet shall he live" II John 11:25



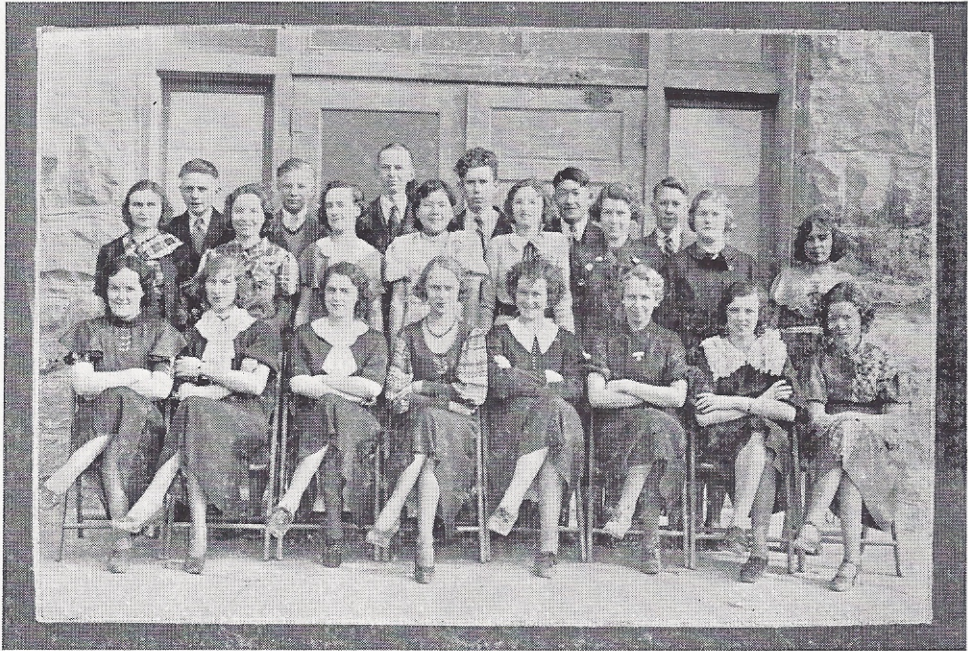
# **ACTIVITIES**

---

---

**HONOR SOCIETY  
BOOSTER CLUB  
SOCIETIES  
H-CLUB**

# MINER



## HONOR SOCIETY

The purpose of the Honor Society in the High School is to award the students whose scholastic standing is above the average. To become a member of the Honor Society a student must have an average of 87% or more in all academic subjects and 90% or more in deportment. Subjects that do not have classes five times a week are not considered in determining members of the Honor Society.

When a student has been a member of the society for one semester he receives an "H" pin decorated with the school colors. Three semesters are required for a silver pin and five semesters for a gold pin.

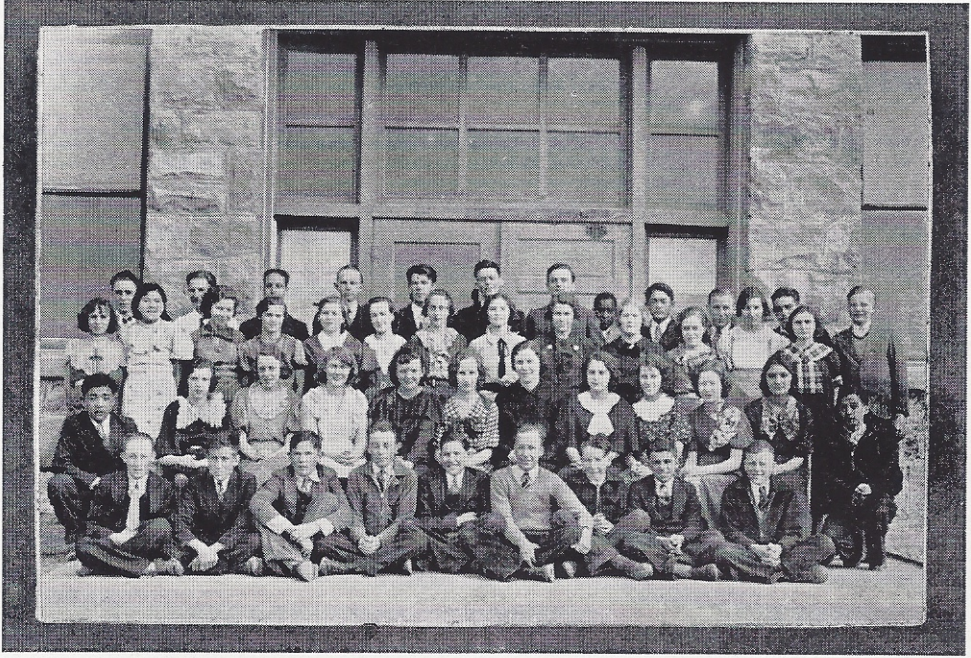
The members of the Honor Society for this school year are:

Rosie Bisignano  
 Flossie Bedford  
 Louise Bowers  
 Helen Briggs  
 Jean Briggs  
 Elsie Kautto  
 Wilho Kivi  
 Richard Kuwabara  
 Eth Lee

Clara Lemoine  
 Corinne McCall  
 Phyllis Milliken  
 Albert Molyneaux  
 Alice Norris  
 Mab'e Norris  
 Harriet Okomoto  
 Leone Russell  
 Gertrude Sa'o  
 Jack Sharrer

Doris Sherratt  
 Harold Siltamaki  
 James Smith  
 Henry Wakabayashi  
 Jane Wales  
 Alice While  
 Katherine While  
 Everett Winchell  
 Esther Worsley

# MINER



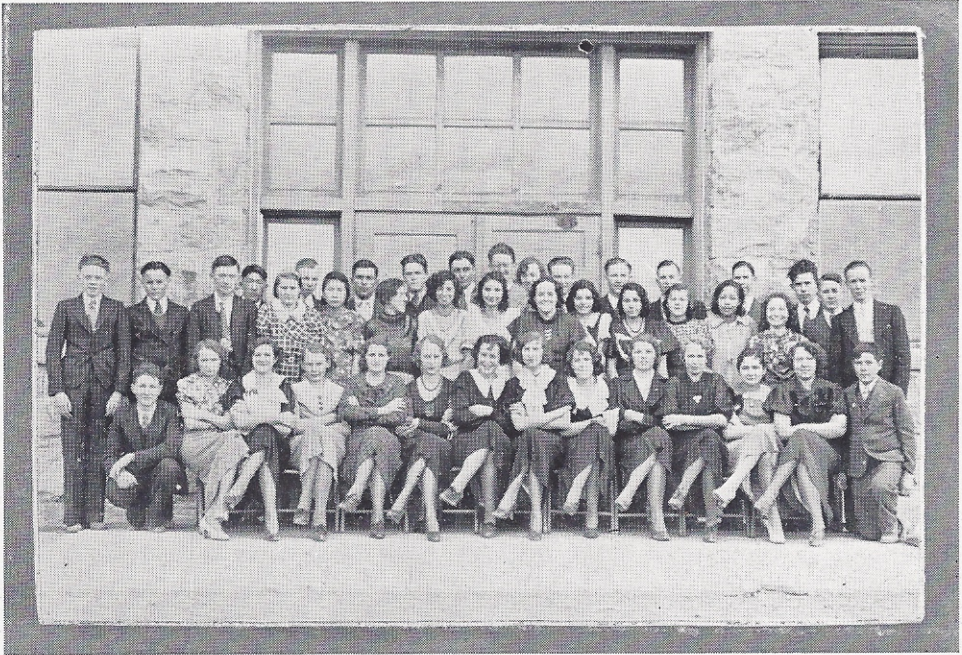
## THE ATHENIAD AND DIATELIAN

The Atheniad and Diatelian Societies, composed of all the members of the Student Body, are two literary societies formed principally for the purpose of encouraging a friendly spirit of rivalry and arousing a desire for competition among the students of the school. To stimulate contests in music, dramatics, athletics, readings, commercial studies, and any other special activities that may be thought advisable, is the source of the aim of these two organizations.

"Atheniad" and "Diatelian" are two Greek words meaning, in general, the feeling of reverence and respect for others. They emphasize the folly of dishonesty, the ill respect for cowardice, the upholding of the ideals of the school, perseverance through all difficulties and hardships, and above all, obedience to the laws and wishes of the school and its superior members.

We sincerely hope that we, the members of the Atheniad and Diatelian societies, may be able to carry on the ideals of our school in years to come.

# MINER



### ATHENIAD

President . . . . . Woodrow Riva  
 Vice President . . . . . Marion Stewart  
 Secretary-Treasurer . . . . Henry Lemoine  
 Sponsor . . . . . Miss Kelson

Ainsworth, Edward  
 Bedford, Flossie  
 Bisignano, Rose  
 Bowers, Edward  
 Briggs, Helen  
 Briggs, Margaret  
 Cowdin, Ruth  
 Cruickshank, George  
 Dexter, Leonard  
 Freeman, Joe  
 Hartman, Le'and  
 Jussi'a, Raakel  
 Jussila, Weikko  
 Kautto, Nellie  
 Kelly, John  
 Kivi, Wilho  
 Krogar, Aro  
 Lee, Beth  
 Lemoine, Henry  
 Lucas, Clarence  
 McCall, Corinne  
 Mellor, Joe  
 Milliken, Ruth

Morgan, Herbert  
 Norris, Mabel  
 Owens, Jesse B.  
 Okamoto, Harriett  
 Park, Donald  
 Pearson, Byrd  
 Pickup, Jack  
 Poulos, Lulia  
 Renny, Beatrice  
 Riva, Woodrow  
 Ryder, Annie  
 Scarpelli, Joe  
 Sherratt, Doris  
 Sitamakki, Harold  
 Stewart, Marion  
 Taccalora, Tony  
 Taylor, Lola  
 Wist, Everett  
 Wales, Jane  
 Walker, Wilmer  
 While, Katherine  
 Wilkes, Virginia  
 Worsley, Esther

### DIATELIAN

President . . . . . Richard Wales  
 Vice President . . . . . Everett Winchell  
 Secretary . . . . . Catherine Evans  
 Treasurer . . . . . Alice White  
 Sponsor . . . . . Miss Randall

Bullock, Bill  
 Bisignano, Susie  
 Bowers, Louise  
 Briggs, Jean  
 Brindley, Dorothy  
 Cruickshank, Melville  
 Dexter, John  
 Evans, Catherine  
 Hartman, La Verne  
 Jones, Le Roy  
 Kautto, Elsie  
 Killion, Clyde  
 Kotsifakis, Pe'e  
 Kuwabara, Richard  
 Lemoine, Clara  
 Lemoine, Joseph  
 Mattila, John  
 Mellor, Mary  
 Milliken, Phyllis  
 Molyneaux, Albert  
 Morgan, Sidney  
 Norris, Alice  
 Norris, Georgie

Okamoto, Sadomi  
 Peterson, Raymond  
 Poulos, Angeline  
 Poulos, Jim  
 Penman, Violet  
 Russell, Bill  
 Russell, Leone  
 Salo, Eugene  
 Salo, Gertrude  
 Sharrer, Jack  
 Smith, James  
 Smith, Veola  
 Taccalora, Julia  
 Tate, Jack  
 Tikkanen, Annie  
 Waissanen, Waitto  
 Wakabayashi, Henry  
 Wales, Richard  
 While, Alice  
 Winchell, Emily  
 Winchell, Everett  
 Wissler, Margaret  
 Zakis, Irene



# MINER



## THE GIRLS' BOOSTER CLUB

The Girls' Booster Club was organized during the second week of school under the supervision of Miss Randall, who was chosen sponsor.

The following officers were elected: Mable Norris, president; Margaret Briggs, vice president; Alice While, treasurer, and Elsie Kautto, representative to the Student Council.

The object of this organization is to promote further interest in all athletics, both boys and girls.

From this group thirty-three girls became members of the Drill Team. At each home basketball game and at two out-of-town games the team gave demonstrations. We all feel that the Drill Team has been a success this year, and next year we hope to have more members than ever, both in the club and in the Drill team.



## "H" CLUB

President . . . . . Melville Cruickshank  
Vice President . . . . . Woodrow Riva  
Secretary . . . . . La Verne Hartman  
Representative . . . . . Clarence Lucas

The "H" Club was organized in 1929 under the sponsorship of Mr. Milam and has since functioned successfully.

A member of the "H" Club must have earned a letter in either basketball or football.

Athletic sweaters are awarded to those having earned a letter in basketball or one in football. To receive an Honor (blue) sweater, which is given to the Seniors, one must have received three letters or more during his four years of High School.

The "H" Club banquet, given each year in honor of the coach, the members, and their guests is served by the High School Cooking Class under the sponsorship of Miss Randall.

### Members:

Melville Cruickshank  
Everett Winchell  
Woodrow Riva  
Richard Wales  
Edward Ainsworth  
Herbert Morgan  
Le Roy Jones

Clarence Lucas  
La Verne Hartman  
Jack Pickup  
Joe Mellor  
Eugene Salo  
Pete Kotsifakis



PLAYING THE GAME

We can't all play a winning game—  
Someone is sure to lose ;  
Yet we can play, so that our name  
No one may dare accuse.  
That when the Master Referee  
Scores against our name,  
It won't be whether we've won or lost  
But how we've played the game.

—*J. B. Downie.*



# ATHLETICS



It is the purpose of education to develop one mentally, physically, spiritually and socialiy. We, therefore, devote our time not only to our text books but also to extra-curricu'ar activities.

One of the extra-curricular activities in which we have all taken great interest has been athletics. This year especially there has been additional opportunity for all of the students in Hanna High School to share in the Physical development program. Last fall such additional equipment as striking bags, boxing gloves, tumbling mats, spring exercisers, etc., were added to the gymnasium equipment; classes in physical education were organized in order that every boy and girl in school might share in the use of the gymnasium and its equipment.

We greatly appreciate the opportunities that have been given to us this year and look forward with great anticipation to an even broader program to be launched next year.

# MINER



## BASKE'TBALL

The Miners basketball squad throughout the season of 1934-1935 enjoyed a fair season, winning seven games and losing nine. The total score for the Miners was 364 and 429 for their opponents.

### OUR SCHEDULE AND SCORES

Hanna . . . . .	17	Rawlins . . . . .	14
Hanna . . . . .	28	Casper . . . . .	23
Hanna . . . . .	21	Laramie . . . . .	24
Hanna . . . . .	19	Green River . . . . .	25
Hanna . . . . .	22	Aberdeen . . . . .	18
Hanna . . . . .	15	Rawlins . . . . .	29
Hanna . . . . .	19	Laramie . . . . .	50
Hanna . . . . .	21	Saratoga . . . . .	12
Hanna . . . . .	20	Green River . . . . .	23
Hanna . . . . .	19	Rock Springs . . . . .	47
Hanna . . . . .	30	Superior . . . . .	41
Hanna . . . . .	26	Saratoga . . . . .	15
Hanna . . . . .	32	Superior . . . . .	29
Hanna . . . . .	20	Casper . . . . .	18
Hanna . . . . .	15	Rawlins . . . . .	24
Hanna . . . . .	31	Rock Springs . . . . .	37



## AWARDS

In an impressive assembly on March 15, 1935, the following athletes were presented with burnt orange sweaters by the "H" club: Joe Mellor, LeRoy Jones, Jackie Pickup, LaVerne Hartman, and Edward Ainsworth. Honor sweaters, signifying three years' participation in athletics, were presented to: Woodrow Riva, Melville Cruickshank, Everett Winchell, Clarence Lucas and Richard Wales.

Special awards were made to the two athletes who had the highest free throw average. The following received the awards: Woodrow Riva, small gold basketball, LaVerne Hartman, small silver basketball.

A silver trophy award by the I. E. Todd Jewelry Company of Rawlins goes this year to Woodrow Riva of the Hanna High School.

## AU REVOIR

During the last six years the destinies of the athletic program in the Hanna High School have been under the direction of Mr. Milam. In this time he has presented some of the fastest teams in the state to the local school. Every year he has had a hard fighting, aggressive, successful basketball team. In 1931 the team won the Class B Championship of the state. In 1933 the team won second place in the state. Our teams have always shown splendid sportsmanship in their contests.

Recently Mr. Milam has decided to enter the floral business in Trinidad, Colorado, and we wish him God-speed and every success in his new work.

# MINER



## GIRLS' ATHLETICS

Girls' athletics in Hanna have not been stressed much in the past several years, but this year much more interest has been taken in them by all the girls. A physical education class was organized with an enrollment of forty-two.

Calisthenics, baseball and archery, were the chief interest until the basketball season started. Then a group of twenty girls met one night a week for basketball practice. The team had only two trips away from home, to Medicine Bow and to Saratoga, but those were trips never to be forgotten ones.

The girls played Medicine Bow in Hanna, and were victorious.

Margaret, Alyce, Leone, Elsie, and Gertrude will graduate this year and will be greatly missed. They have all been faithful players since entering high school. Margaret, Alyce, Leone, and Elsie will receive honor sweaters, signifying that they have played three years on the team.





# **GENERAL**

---

---

**Plays**

**Operetta**

**Orchestra**

**Glee Club**

**Sextette**

**Banquet**

# MINER



PIONEER STAFF 1934-35

# MINER



## JUNIOR-SENIOR PLAY

On April 13 the Junior-Senior Classes, under the direction of Miss Francis, successfully presented the three-act farce "A Full House."

Imagine a reckless wealthy youth who writes love letters to a designing chorus girl, an attorney brother-in-law who steals the letters and gets his hand-bag mixed up with the grip of a burglar who has stolen a necklace from the mother of the youth, and the efforts of the crook to recover his plunder. Thus the story progressed presenting situations screamingly funny and lines holding a fund of humor.

The cast consisted of Clarence Lucas, the attorney; Mable Norris, his wife; Margaret Briggs, her sister Daphne; Leone Russel, the girls' spinster aunt; Jimmie Smith, Daphne's fiance; Louise Bowers, the owner of the apartment; Wilho Kivi, her butler; Gertrude Salo, her maid; Catherine Evans, the mother who lost the jewels; Clyde Kill'on, the burglar who stole them; Eugene Salo, Richard Wales, and Woodrow Riva, who were attempting to find a burglar; and Esther Wersley, the designing chorus girl.



## OPERA'TTA

On April 27, the Hanna High School Glee Club, under the direction of Miss Kathleen Ferguson, successfully presented the operetta, "Bits 'O Blarney."

Mike O'Noole, a jolly and witty Irish caretaker, helps to clear up the confusion arising when a young Dr. Quack comes to the village and takes most of the girls from the other boys. Patrick has had a quarrel with Peggy, and to play a joke dresses up as a girl and has Dr. Quack make love to him. Mike has his laugh when Dr. Quack learns that Patrick has been fooling him, but a bigger laugh when Patrick learns that Dr. Quack is really Peggy.

The cast was: Peggy, Leone Russell; Patrick, Evert Wist; Mary, Emily Jane Winchell; Mike O'Noole, Bill Russell; Agnes, Jean Briggs; Rosie, Virginia Wilkes, and Robert, Ed Ainsworth.

Between acts a special group of costume dances were presented by the Japanese ladies of Hanna. Marjorie Baillie and Margaret Banber also assisted with tap dancing.

# MINER



## ORCHESTRA

The orchestra this year has given faithful support to every entertainment in which it has appeared. It is composed of the following people:

Corinne McCall  
Doris Sherratt  
Mable Norris  
Irene Zakis  
Angelina Poulos  
Flossie Bedford

Wilho Kivi  
Clyde Killion  
Billy Bullock  
Robert Norris  
Raymond Peterson

# MINER



## GLEE CLUB

The Glee Club this year, under the instruction of Miss Ferguson, has made commendable progress. There are 31 members in this club, which, during the year, has added much to entertainments. We sponsored a delightful operetta on April 27, 1935. The members are:

Flossie Bedford  
 Susie Bisignano  
 Rosie Bisignano  
 Jean Briggs  
 Helen Briggs  
 Dorothy Brindley  
 Elsie Kautto  
 Nellie Kautto  
 Corinne McCall  
 Phyllis Milliken

Georgie Norris  
 Beth Lee  
 Harriet Okomoto  
 Sadomi Okomoto  
 Freda Pickup  
 Violet Penman  
 Angelina Poulos  
 Lulia Poulos  
 Annie Ryder  
 Beatrice Renny  
 Leone Russell

Gertrude Salo  
 Veola Smith  
 Marion Stewart  
 Julia Taccolone  
 Annie Tikkanen  
 Virginia Wilkes  
 Emily Jane Winchell  
 Jare Wales  
 Katherine White  
 Irene Zakis

## SEXTETTE

The six girls who comprise the Double Trio, or Sextette, are chosen from the Girls' Glee Club. This year the Sextette performed for the Christmas program and Senior play. The members are:

Jean Briggs  
 Emily Jane Winchell  
 Beth Lee

Corinne McCall  
 Leone Russell  
 Beatrice Renny



## THE JUNIOR-SENIOR BANQUET

The Junior-Senior Banquet was held in the Community Hall on the evening of May 11. The guests of the Junior Class were the Seniors, the faculty, and the school board. After a delicious dinner served by the Home Economics girls under the supervision of Miss Randall, toasts were given by various members of the Junior and Senior classes.

The banquet was followed by the Junior Prom, given in the high school gymnasium. Those attending the Prom were the Juniors, the Seniors, the parents of the Juniors and Seniors, the faculty, the alumni, the school board, and the guests of the above named.

The gymnasium was decorated to represent a Southern garden party. This idea was carried out by means of a white picket fence and archways covered with sweet peas, the porch of a southern mansion and various other decorations.

A Negro orchestra, namely Jackson's Dance Band, furnished delightful music.

# MINER



## THE TWO HIGH SCHOOL LATIN CLUBS

Latin classes, I and II, organized separate clubs for the purpose of creating a stronger interest in the Latin language, tending to bring students closer together by having and working for a common interest.

The Latin II club adopted the name "Laeti Latina," which means "Happy Latins;" the Latin I club called themselves "Pugnatores Bellicose," meaning "War-like Fighters." The mottoes selected were: Club II, "Labor Omnia Vincit," meaning "Labor Conquers All;" Club I, "Festina Lente," meaning "Make Haste Slowly." Latin Club II colors were purple and gold representing power and royalty.

First semester officers of Club II were as follows: Two consuls, president, and vice president, Clarence Lucas and Melville Cruickshank; scribe (secretary), Joe Mellor, and quaestor (treasurer), La Verne Hartman. The second semester the two consuls were changed to a Consul and a Pro-Consul. The officers were: Consul, Clara Lemoine; Pro-Consul, Elsie Kautto; Scribe, Esther Worsley, and Quaestor, Catherine Evans.

Latin Club I organized during the second semester only, with the following students as officers: Consul, Jean Briggs, Pro-Consul, Henry Wakabayashi, and Scribe, Nellie Kautto.

The clubs met separately, every other Friday. Roll call was taken and each student responded by giving a Latin Quotation; the minutes of the former meeting were read and the old and new business discussed. Programs consisted of singing songs in Latin and playing Roman games.

On December ninth the Latin II club gave a party at the gym. Each member invited a guest. A Christmas tree and the exchanging of presents added to the fun.





## HUMOR

Pud: "The fullback just kicked off."

Mary: "I didn't know he had been hurt."

The modern girl may be excused for being blue but not for being green.

Harold: "And will my photo be anything like me?"

Photographer: "Yes, Mr., but we can alter that."

Many young people are willing to start at the bottom if they may go up in an elevator.

Tony: "Sir, I would like to marry your daughter."

Mr. Briggs: "All right, leave your name and address, and if nothing better turns up we will notify you."

Remember the "U" is the most important letter in your success.

Teacher: "Johnny, why does Missouri stand at the head in mule raising in the United States?"

Johnny M: "Because the other end is dangerous."

Emily Jane: "I want to buy a petticoat."

Clerk: "Yes, Miss, period costumes on the third floor."

Jesse B: "What are you doin' wid dat dare paper?"

John Willy: "I'se writin may gal a lettah."

Jesse B: "Go way Nigger, you kaint write."

John Willy: "Dats all right big boy. Mah girl kain't read."

Eugene S: "Hey! waiter hey!"

Waiter: "All right sir, but we'll have to send for it."

Absence makes the marks grow rounder.

Miss Ferguson: "Why did you put quotation marks at the beginning of your examination?"

Robert N: "I was quoting the man in front of me."



## HUMOR

Many a poor fellow merely gargles instead of drinking deep of this fountain of knowledge.

Shorty W: "Why did you break your engagement with that school teacher?"

Harry D: "I didn't show up one night, and she wanted me to bring a written excuse from my mother."

Pity the poor fish who thinks his seat of learning is a davenport.

Housewife: "No, I don't want no cookbook, nor no almanac, nor no book of no kind."

Book Agent: "Then how about a good cheap grammar?"

Early to bed and early to rise and never meet any prominent guys.

High School Girl: "I have just been rated 50 per cent sex appeal."

Pal: "How's that?"

High School Girl: "Well, I have sex but no appeal."

All that lies between the high school student and the top of the ladder—is the ladder.

Miss Kelsen: (Who had been giving the class Latin phrases.) "Pete, what does Nota Bene mean?"

Pete K: (After thinking.) "That's what pa says when ma asks him for money."

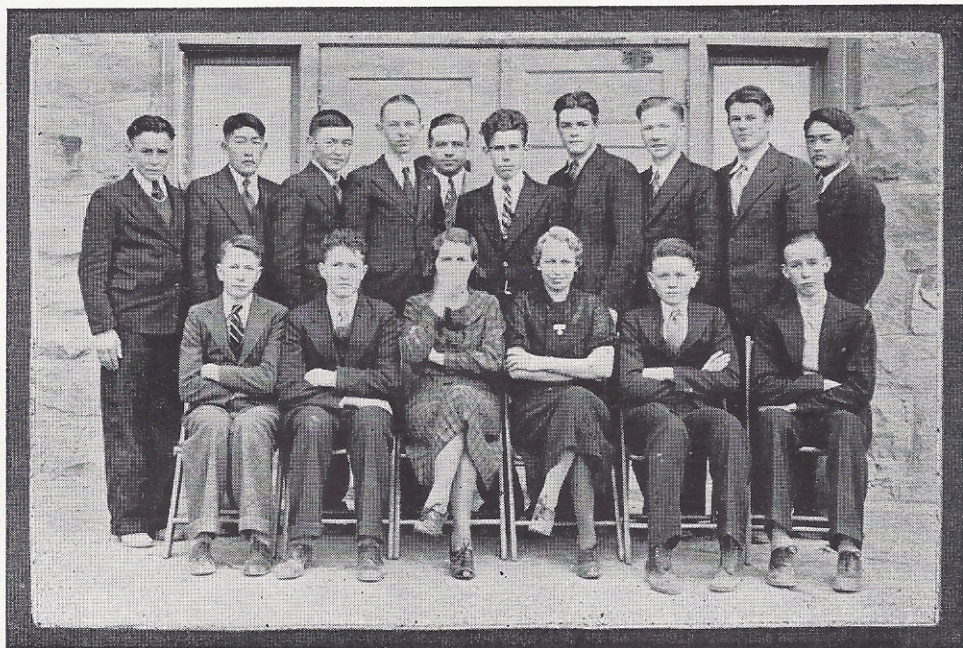
Grandfather: "Nowadays I never see a girl blush. In my day it was different."

Granddaughter: "Why grandpa! What ever did you tell them?"

Soph: "Just think!"

Frosh: "What?"

Soph: "Think what a hard time two cross-eyed people have looking each other in the eye."



## PRINTING STAFF

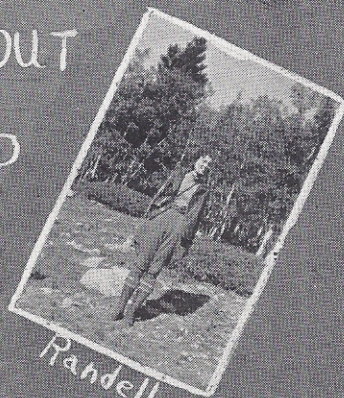
The Printing Staff of the Hanna High School was organized in January 1935 under the direction of Mr. McCall with James Smith, Jack Sharrer, Albert Molyneux, Harold Siltamaki, and Herbert Morgan as chief printers and B. Bullock, Gertrude Salo, Alice While, Wilho Kivi, Raymond Peterson, Clyde Killion, Richard Kuwabara, LeRoy Jones, Bill Russell, Fred Wakadayashi, Sidney Morgan assistant printers.

# MINER

WE LEARNED ABOUT  
SCHOOL FROM  
THESE



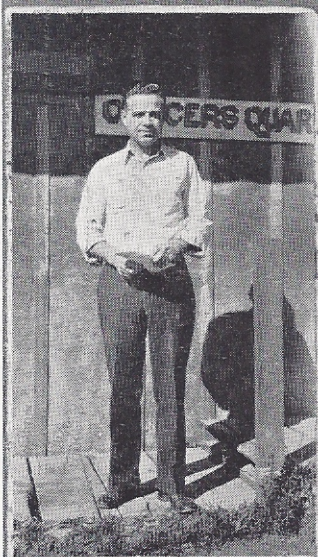
Pearson



Randell



Knudson + Francis



Mr. McCall



Kelsen



Ferguson



Knudson

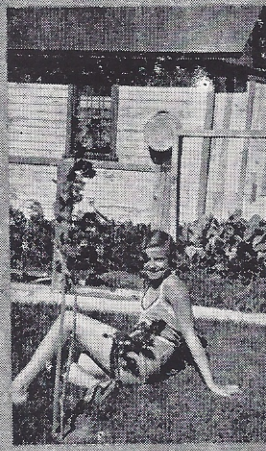
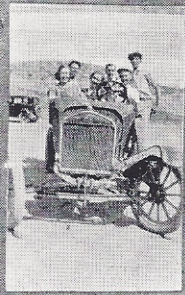
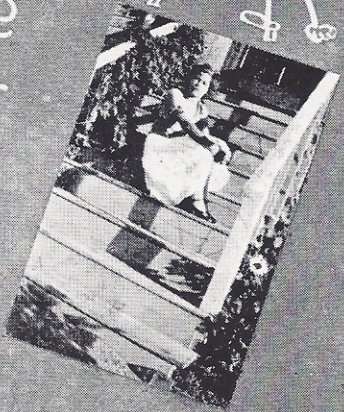


Thompson + Loach

# MINER



Just Kids  
You Know



# MINER

## BABY DAZE



Mabel



Joane



Louise



Killie



Rich Kivi Clyde Pic Kup



Kivi



Ev



Pi + Emily Jane



Catherine



Alice + Dolly

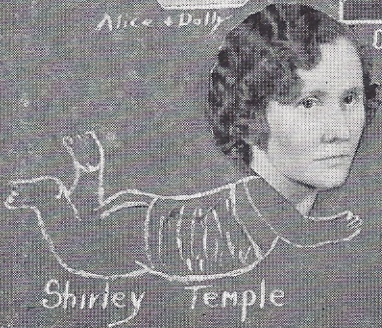


Elera + Geof



Garbie

### OUR SPONSORS



Shirley Temple



Baby LeRoy



## CALENDAR

### September—

- 1-2. Today we were all *supposed* to register.
3. Labor Day—which doesn't apply to us. We haven't started to work yet.
4. 'Ray, vacation's over. Now maybe we can get some rest.
- 4-6. Teachers Institute. Holidays for all of us (Oh Yeah?)
7. Classes were organized and at an assembly we were reminded that etiquette is saying "No thank you" when we mean "Gimme."
9. Now we are getting used to it again, school we mean.
13. Freshies if I were in your pants, I'd invent another use for steel—lining.
18. Have the Freshies been getting the works in assembly? Just ask them.
22. Football game with Green River today.
28. Freshman party. It was very educational. And also, today is Jewish New Year.
29. Hi Freshies! What ever became of Senna Tea?
30. Hold on kids. It's almost October.

### October—

4. Football again. Hanna lost to Laramie. IMAGINE! But did we dig up the turf.
6. Windows were fixed in the Library—so the teachers could keep an eye on all of us.
12. Columbus Day—he didn't know where he was going, but he got there just the same.
17. Today is the day we got our first report cards. Oh boy!!
20. Fine day to dig potatoes. And where would we be without potatoes? (A lot thinner I'll bet.)
26. Today, the ditto machine was purchased, source of all the Pioneer staff's troubles.
31. And today is Hallowe'en—Oooooohhh! Remember Marion's and Clara's parties?

### November—

7. Pioneer was started. "A High School paper is a queer invention. The High School gets the fame, the printer gets the money, and The Staff gets all the blame."
9. The two societies were organized. Miss Randall rides herd on one bunch, and Miss Kelsen takes care of the other.



## CALENDAR

14. Valentine day. They ought to call it "Off the chest day" by the looks of some of these comic valentines.
16. Casper at Hanna; 18-20.
19. Drill team to Rawlins—24-15.
20. Miss Kelsen lost her voice—remember?
22. Medicine Bow boys beat Hanna; Hanna girls won.
22. Washington born—and this is the day the Pioneer was out again and a week till the end of the month.
23. Rock Springs came here and we arose to the occasion.
28. Ah, only 28 days—that's a break.
28. District tourney starts.
28. District tourney finals.

### *March—*

6. Report cards again!
- 7-21. Spring tournament.
15. Basketball sweaters were awarded to 10 boys.
16. Surprised not to see green finger nails—they're next.
17. St. Patrick's day.
21. Spring is here.
- 25-April 10. Girls' tourney.
31. Tomorrow's April—looks like rain.

### *April—*

1. Gardening takes your mind off yourself, which might be a good idea for some people. April Fool's Day an 8-hour day. Watch for soap when Scottie offers you a bite of somethin' today.
13. Senior play. "A Full House."
14. Report cards.
21. Easter.
25. Senior dance.
26. Operetta. We should have been six weeks earlier to greet St. Patrick.

### *May—*

1. Did you hang your baskets?
11. Junior-Senior Banquet and Prcm. Report cards for the last time for some of us.
10. Senior Day.
12. Mother's Day.
19. Baccalaureate.
- 20-22. Semester Exams.
24. Commencement—Dance. Goodbye old school.





## ALUMNI

1920

Annala, Lempi  
Christensen, Alice M.  
Klaseen, Edna  
Lepponen, Hans P.  
Milliken, Jean

1921

Sherratt, Mary Ellen  
Kangas, Esther E.  
Myroie, George E.

1922

Annala, Ida  
Hoxton, Jeanie D.  
Huhtala, Sylvester  
Malenburg, Hilda  
Myroie, Lilly  
Ojala, Helma  
Thomas, Earl M.  
Woods, Henry  
Wright, Jane

1923

Butler, Grace  
Christensen, Dorothea J.  
Dodds, Ettie E.  
Dodds, Emily E.  
Ellis, David  
Ellis, Cora E.  
Ellis, Helen M.  
Hudson, John H.  
Lyons, Harry  
Malenberg, Lillie M.  
Massey, Mabel E.  
Matson, Lempi J.  
Mumm, Margaret C. E.  
Myroie, Albert C.  
Ojala, Gust A.  
O'Malley, Austin A. O.

1924

Campbell, Emily  
Campbell, Margaret  
Christensen, Frances L.  
Jackson, Margaret E.  
Hudson, Doris M.  
Hughes, William A.  
Huhtala, Vendla S.  
Lucas, Jessie  
Martin, Donald  
Ojala, George  
Rider, Robert W.  
Ridge, Susie M.

Scarpelli, Fenus  
Thomas, Margaret

1925

Chadwick, Millie  
Crawford, Albert G.  
Groutage, Percy J.  
Hodgson, Alice E.  
Kivisto, Lydia  
Lehti, Arvie J.  
Lehto, Mamie  
Rider, Roy  
Rodda, John  
Scarpelli, Sam  
Scarpelli, Susie  
Tate, Luella

1926

Annala, Anna  
Barton, Clyde W.  
Bedford, John D.  
Clegg, William  
Crawford, Muriel A.  
Dickinson, Tommie G.  
Hudson, Thomas G.  
Hudson, William  
Maki, Tynne M.  
Maki, Uno R.  
Russell, Clark C.  
Tate, Leona  
Wright, Beth M.

1927

Campbell, Lena  
Clark, Edna L.  
Clegg, James  
Dickinson, Sarah  
Erickson, Ruth  
Grooman, Mayme  
Hakala, John  
Harrison, Rose A.  
Kandolin, Wilho  
Kautto, Sylvia  
Lepponen, Eric  
Meekin, Anna  
Milliken, Dorothy A.  
Nelson, Pearl  
O'Malley, Stella  
Scarpelli, Ralph W.  
Stebner, Charles M.  
Thomas, John  
White, Alma M.  
Wright, Mabel E.



## ALUMNI

1928

Allison, Lester  
Attride, James  
Bailey, Bruce  
Barton, Ray  
Boam, Marie  
Christensen, Evelyn  
Clark, Raymond  
Crawford, Edith  
Erickson, Lena  
Fearn, Letha  
Freeman, William  
Hakala, Reino  
Hodgson, Annie  
Koivisto, Helvi  
Kumpola, Evor  
Lehti, Uno  
Leino, Meimi  
Lucas, Eileen  
Milliken, Robt.  
Penman, George  
Salo, Elvira  
Tammela, Suoma  
Tate, Ila  
Waisanen, Viola  
Wakkuri, Mamie

1929

Baillie, Mildred  
Barton, John  
Bizen, Joe  
Bizen, John  
Briggs, Kenneth  
Crank, Stanley  
Denny, Alice  
Ekman, Yngve  
Eskeli, Waino  
Harrison, Alice  
Hunt, Olga  
Jackson, Joe  
Kandelin, Weikko  
Kuoppala, Reino  
Lepponen, Ina  
Leivo, Ellen  
Luoto, Vieno  
Maki, Hilda  
Mangan, Tuttie  
McCelland, Margaret  
Morgan, Harold  
Nystrom, Nellie  
Scarpelli, Rose

Williams, Elma

1930

Aho, Swante  
Benedict, Florence  
Bizen, Carmen  
Campbell, James  
Case, Lucy  
Chadwick, Phyllis  
Crawford, John  
Dickinson, Joseph  
Erickson, Carl H.  
Fearn, Ruby  
Glad, Nilo  
Grace, Mildred  
Hakala, Uno  
Hudson, Hilda  
Hunt, Richard  
Jones, Hazel  
Lahti, Helen  
Matson, Evor J.  
Leino, Amelia  
Meekin, James  
Milliken, John F.  
Paulethich, William  
Peckenpough, Beulah  
Puro, Hannah  
Riva, Evalt  
Rodda, Howard B.  
Russell, Dorothy E.  
Salo, Oliver

1931

Aho, Wilho M.  
Baillie, Burr  
Crawshaw, Jack  
Lucas, Leonard  
Clegg, Dan  
Cook, Eilleen  
Crawford, Elizabeth  
Ekman, Bertha  
Freeman, Elizabeth  
Hakala, Bertha  
Hill, Ingrid  
Hunt, Dorothy  
Pasanen, Anna  
Saari, John  
Stultz, Garnet  
Taccalone, Emilia  
Van Renterghen, Helen  
Winchell, Marjorie



## ALUMNI

1932

Bedford, Roy  
Benedict, Dorothy  
Bizen, Jean  
Briggs, Alexander  
Cook, Dorothy  
Edlund, Ellen  
Grooman, Marie  
Holma, Elsie E.  
Kivisto, Oiva  
Kumpula, Gustie  
Lahti, Olga I.  
Lochart, Hazel  
Lucas, Irene

Mellor, Mildred  
Milliken, Marion H.  
Molyneaux, Roberta  
Nurmi, Ella  
Penman, Thelma  
Pomeroy, Carlyle B.  
Puro, Bertha  
Renny, Margaret G.  
Russel, Muriel  
Scarpelli, Angeline S.  
Scarpelli, Louis  
Siltamaki, Raymond  
Taccalone, Carmelia  
Van Renterghen, Anna Elizabeth  
Warburton, Elizabeth Willetta  
Wakkuri, John M.  
While, Joe W.  
Williams, Daisy

1933

Lemoine, Clarence  
Anderson, James  
Clark, Frank  
Hakala, Arnie  
Hearne, Frank J.  
Lee, Jack  
Lucas, Vincent

Mellor, Gilbert  
Ruskanen, Andrew  
Saxberg, Gust W.  
Scarpelli, Tony  
Thomas, Virgil R.  
Warburton, Robert  
Boam, Euphemia  
Forth, Naomi  
Mangan, Leona  
Nelson, Eva  
Tate, Annie E.  
While, Sarah Anne  
Williams, Eino

1934

Hearne, Reginald  
Sherratt, Doris  
Riva, Mamie  
Renny, Beatrice  
Lahti, Mildred A.  
Hinek, Marion  
Hinek, Bessie  
Higgins, Lillian  
Grooman, Dorothy  
Crank, Elizabeth  
Buehler, Margaret J.  
Bizen, Angelina  
Amoss, Agnes S.  
Brindley, Evelyn M.  
Clegg, Bessie  
Ahlstrom, Bert  
Dickinson, Albert  
Gaskill, John  
Kivisto, Tenho  
Morgan, Charles  
Owens, Sylvester  
Puro, Arthur  
Waits, Bill  
Wissler, Henry  
Worsley, Evelyn



## STAFF FAREWELL

Our deed is done, and the past school year is, to all, a fond memory. In this annual we have recorded the events which have made this year an unforgettable one. It has been a pleasure and an inspiration to prepare this issue of the Miner and may every student in Hanna High read and enjoy its contents.



# HANNA STATE AND SAVINGS BANK

HANNA, WYOMING

---

Established in 1892 this bank has served the people of Eastern Carbon County for FORTY-THREE years.

---

The cooperation and guidance of a modern banking connection is without doubt very essential. We invite you to call and talk over your financial problems with our officers.

---

JOHN QUEALY,  
President

C. D. WILLIAMSON,  
Vice-President

S. D. BRIGGS,  
Cashier

---

## BOARD OF DIRECTORS

John Quealy — C. D. Williamson — S. D. Briggs  
Ivor Christensen — Thomas Love



# LARAMIE PRINTING COMPANY

PRINTERS

STATIONERS

BINDERS



WE PRINT ANYTHING FROM A CALLING  
CARD TO A DICTIONARY

PHONE 3194

221 Grand Ave.

Laramie, Wyo.



When in Rawlins Make Our Store Your Headquarters  
**WHERE ALL YOUR DRUG WANTS CAN BE  
SATISFIED**

Mail Orders Receive Our PROMPT Attention

**RENDLE'S DRUG STORE**

Save With Safety at Our Store

**ALWAYS**  
EVERYTHING IN SEASONABLE  
**CUT FLOWERS AND PLANTS**  
**CLIPPINGER'S FLORISTS**

GREENHOUSE—357 NO. 4TH ST.

LARAMIE, WYOMING

**'THRIF - T**

This service consists of washing your entire family bundle, returning your large flat pieces ironed and the wearing apparel, handkerchiefs and napkins in a damp condition, just right to iron. Shirts Finished 10 cents extra.

MONDAY, TUESDAY, WEDNESDAY . . . . .13 lbs. for \$1.05; 8 cents lb.  
THURSDAY, FRIDAY . . . . .15 lbs. for \$1.05; 7 cents lb.

"Intelligent women today are trying to get the most quality value for the dollar they spend. In my laundry service—which is well named, 'Thrifty'—I have found both quality and value in my \$1.05 bundle."—Mrs. Hodgman, Rawlins.

**TROY LAUNDRY & CLEANERS**

PARCO TELEPHONE 33

RAWLINS TELEPHONE 189

**C. F. HOECKEL**

BLANK BOOK & LITHOGRAPHING CO.

BANK, COUNTY AND CORPORATION WORK IS OUR  
SPECIALTY—EXCLUSIVE "Y AND E" AGENTS  
SAFES, FILES AND SUPPLIES

Phone KEystone 3141

1524-1528 Arapahoe St., Denver, Colo.



# PROGRESS

Any man who uses his normal senses will know we are in the midst of a new progress. Our economic machine was thrown out of alignment, but repairs are made and we are again moving forward with increasing speed.

Our stores are responding to the demand for new products, new values, and new selling ideas; this progress is reflected in our new 1935 lines on display.

FRIGIDAIRE ELECTRIC ICE BOXES  
BOSCH and PHILCO RADIOS  
HOOVER VACUUM CLEANERS  
SIMMONS BEDS—MATTRESSES  
HEATROLA PARLOR HEATERS  
PARLOR SETS—BED ROOM SETS  
MAJESTIC and QUICK-MEAL RANGES  
MAYTAG and AUTOMATIC WASHERS

All Sold on easy Monthly Payments at

**The Union Pacific Coal Company Stores**

"WHERE YOUR DOLLAR IS A BIG BOY ALL THE TIME."

ROCK SPRINGS

RELIANCE

WINTON

SUPERIOR

HANNA





FOR OVER A QUARTER OF A CENTURY

Manufacturers of Quality Products

**FLOOR FINISHES . . . CLEANERS  
LIQUID SOAPS . DISINFECTANTS**

AND COMPLETE LINE OF PRODUCTS PERTAINING  
TO MODERN SCHOOL MAINTENANCE  
AND SANITATION

For Further Information Write

**HILLYARD CHEMICAL COMPANY**

ST. JOSEPH, MISSOURI, U. S. A.



TELEPHONE 406

NINTH AND CEDAR

**THE GRANT MACKAY  
LUMBER CO.**

LUMBER AND BUILDING MATERIAL

RAWLINS,

-:-

-:-

-:-

WYOMING



## HANNA THEATRE

THE COOLEST THEATRE IN THE STATE!

WE SHOW THE BEST WITH THE BEST!

MODERN EQUIPMENT

## LOVE'S CONFECTIONARY

CANDY — SOFT DRINKS — KODAK EQUIPMENT

LUNCHESES — POOL — BEER

THOMAS LOVE, Proprietor

Hanna, Wyoming

**G**ASOLINE  
**G**ROCERIES

ELMO,

**S**URPASSING  
**S**ERVICEABLE  
**S**ANITARY  
**S**ILVER CABINS

WYOMING

A. S. ALLEN, Proprietor



SALES and SERVICE

## SERVICE GARAGE

H. SORENSON, Proprietor

ELMO, WYOMING

P. O.—HANNA



CONGRATULATIONS AND ALL GOOD  
WISHES TO THE CLASS OF 1935

When visiting Rawlins, make this Friendly and Interesting  
store your headquarters.

**ED A. SMYTH STORE**  
RAWLINS, WYOMING

COMPLIMENTS OF  
*RED FEATHER CAFE*  
AND  
*BEER GARDEN*

GREEN RIVER, WYOMING

ESTABLISHED 1887

ESTABLISHED 1887

**H. LARSEN**

HARDWARE — LUMBER — COAL  
BUILDING MATERIALS

PAINTS — OIL — GLASS

TELEPHONE 26

208 West Lincoln Highway

Rawlins, Wyoming

WHEN IN ROCK SPRINGS WELCOME TO THE

**WESTERN CAFE**

OPEN DAY AND NIGHT

QUALITY FOOD

REASONABLE PRICES



PHONES: 4502, 2968 OR 3301

207 ROACH BLDG.

**DR. C. M. STEBNER**  
Dentist

LARAMIE,

WYOMING

**CONGRATULATIONS AND SUCCESS**  
TO THE  
CLASS OF '35

**DR. F. W. EBINGER**

HANNA,

WYOMING

Congratulations to the  
CLASS OF 1935

**S. K. BRIGGS**  
Attorney and Counselor at Law

RAWLINS, WYOMING

**CONGRATULATIONS**  
AND BEST WISHES

to the  
CLASS OF 1935  
**C. D. WILLIAMSON**

HANNA,

WYOMING



WE EXTEND CONGRATULATIONS TO YOU,  
CLASS OF '35



WHEN IN RAWLINS STOP AT THE

*NEW*  
*PALACE*  
*CAFE*

"Where our Hanna patrons are given excellent and  
courteous service"



Drink Sheridan Export Beer—A Wyoming Product



## ALLEN MOTOR COMPANY



SALES—SERVICE

EXPERT REPAIRING . . . WELDING . . . TOWING

S. SILTAMAKI, Proprietor

ELMO, WYOMING

P. O.—HANNA

## *JACKSON'S DANCE BAND*

MUSIC YOU'LL LOVE TO DANCE TO

MARK JACKSON

Director

— Manager



Joe Jackson, Erick Lepponen, Bert Tavelli, Waco Kandolin

Kat Kandolin and Bill Bullock.



HANNA, WYOMING



# VERICHROME FILM

AND

Our Developing and Printing Service

That's a Formula for Successful Snapshots That is  
Hard to Beat—Try It Soon

SEND YOUR FILMS TO US FOR  
EXPERT FINISHING

## HILDRETH STUDIO

HILDRETH BUILDING

LONGMONT, COLO.

COMPLIMENTS OF

## W. A. (WALT) PILON

---

SUITS AND OVERCOATS MADE TO  
MEASURE

FIRST-CLASS TAILORING

---

1131 Downing Street

Denver, Colorado



**THE BEST IN**  
MEATS . . DRY GOODS . . GROCERIES

**THE SAMPO CO-OP STORE**

ELMO, WYOMING

P. O.—HANNA

SAFE

DEPENDABLE

**BUS SERVICE**

PICNIC PARTIES—LODGES—TEAMS

S-E-E

**MARK JACKSON**

HANNA,

WYOMING

**HANNA HOTEL THE "HOME HOTEL"**

Clean, Comfortable, Courteous Service

Home Cooked Meals a Specialty

MR. and MRS. F. E. FORD, Proprietors

HANNA, WYOMING

**JACKSON'S BARBER SHOP**

"IT PAYS TO LOOK WELL"

**MARK JACKSON**

Proprietor

HANNA,

WYOMING





# THE FORD V-8 FOR 1935



Eight-Cylinder Smoothness

Wider, More Comfortable Seats

New Baked-Enamel Finish

Comfortable Zone Ride

Proven Dependability

More Body and Leg-Room

Fast and Powerful

123 $\frac{1}{8}$ -Inch Spring Base

Proven Economy

New Modern Beauty

Modern and Distinctive



For these, and many other reasons, the V-8 Ford has  
become America's most popular car.

DEMONSTRATION WITHOUT OBLIGATION

**F. M. JOHNSTON MOTOR CO.**

RAWLINS, WYOMING

TELEPHONE 306



W H R PRINCE DOMINOS ARE WINNERS  
WHR BULLS GRAND CHAMPIONS AT DENVER SEVEN  
TIMES—1926, '27, '28, '29, '30, '33, '35

In the stiffest sort of competition, at the biggest carlot show in  
the nation. An unequalled record in the history  
of the Denver Show.

Put WHR Bu'ls to work in your herd and improve your cattle.

WHEN YOU BUY  
W H R BULLS YOU BUY THE BEST  
WYOMING HEREFORD RANCH  
CHEYENNE

WORKINGMEN'S COMMERCIAL CO.

GROCERIES

FRUITS

VEGETABLES

You can depend on us for the best.

—Try Us—

DAILY DELIVERY SERVICE

ELMO,

WYOMING



MODERN PLUMBING  
AND  
HEATING CO.



WE SPECIALIZE  
IN  
STEAM AND

HOT WATER HEATING SYSTEMS  
AUTOMATIC COAL STOKERS

SEE US ABOUT  
MODERN PLUMBING FIXTURES  
FOR THAT  
NEW BATH ROOM



H. H. JOHNSON, Prop.  
DIAL 4314

408 THIRD ST.

LARAMIE, WYO.



## COLLINS FLOWER SHOP

"Flowers That Truly Express Sentiments"

**LYLE COLLINS, Proprietor**

Rawlins,

Wyoming

## NEW YORK LIFE INSURANCE CO.

SPECIAL REPRESENTATIVE

TOM LAPHAM

Box 497

Laramie, Wyoming

## HANNA PRINTING COMPANY

---

Job printing of all kinds

Supplies

---

HANNA,

WYOMING



**AUTRY BROTHERS**  
—ENGRAVERS—

Lawrence and Twenty-third Streets at Broadway  
DENVER, COLORADO

FRANK W. AUTREY

EUGENE AUTREY

**BUILDERS SUPPLIES**

PAINTS - GLASS - BRUSHES  
ETC.

REMEMBER US WHEN YOU ORDER ANYTHING

**OVERLAND LUMBER COMPANY**

RAWLINS

F. E. TICKNER, Manager

WYOMING

When you get into a tight place and everything goes against you, till it seems as though you could not hold on a minute longer, never give up then; for that is just the place and time that the tide will turn.

WISHING ALL THE BEST OF SUCCESS

Visit Us When In Rawlins

*Rawlins - Electric - Company*

RAWLINS,

WYOMING

We Sell All Grades and All Kinds of  
**LUMBER AND PANELS**  
TO MANUAL TRAINING SCHOOLS

Can cut to lengths required. Write us for prices.

**THE DENVER LUMBER COMPANY**

DENVER, COLORADO